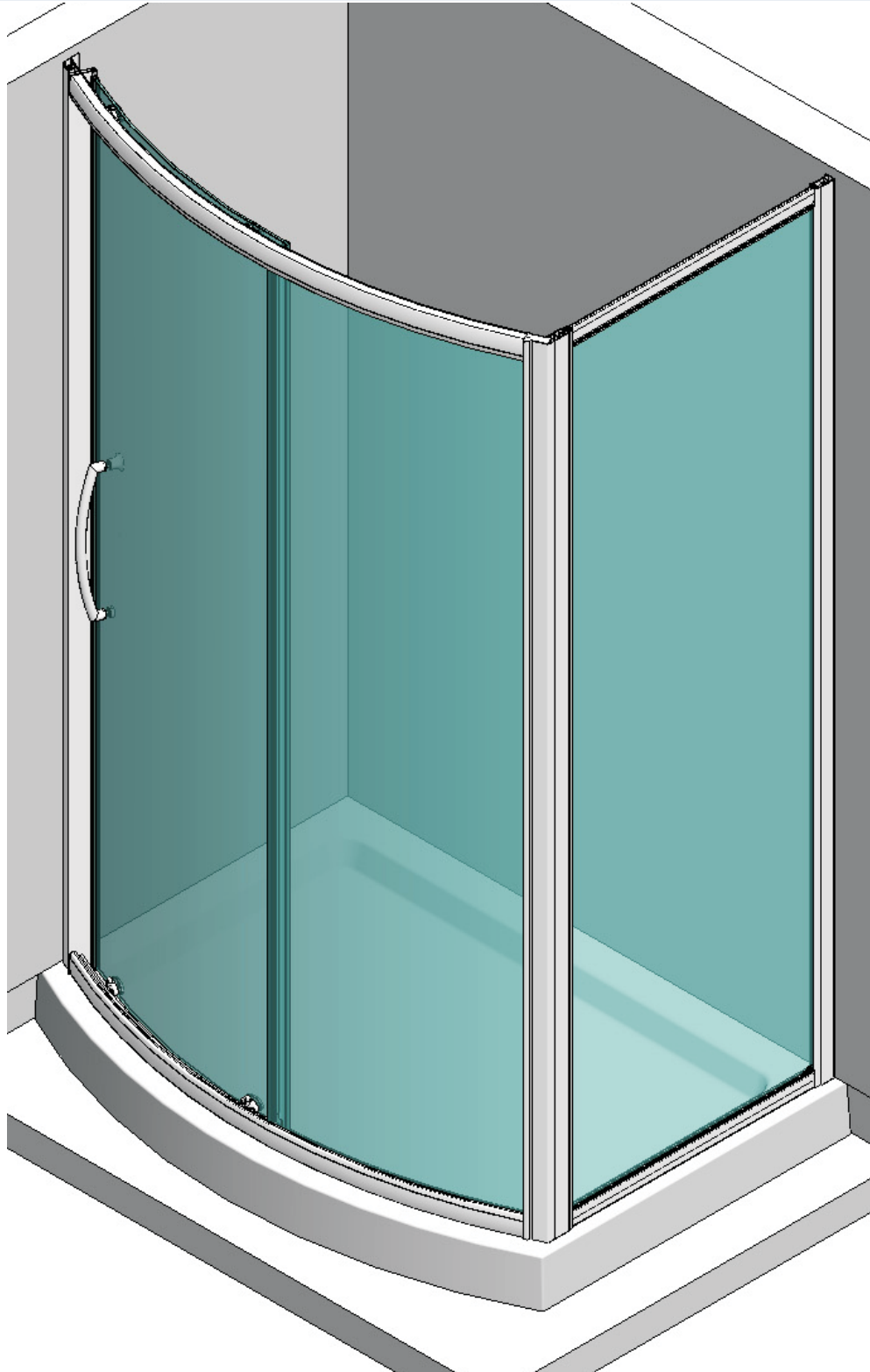


# BOWFRONT SIDE PANEL

## Installation / Maintenance Instructions



## IMPORTANT NOTES :

Please Read Carefully & Retain these instructions for Future Reference.

1. For ease & safety we advise that two persons assemble this product.
2. Protect shower tray surfaces at all times.
3. Check for cables, pipes etc before drilling walls.
4. Ensure all surfaces are dry, clean & free of loose debris / dust.
5. Unpack goods with care (small parts can become lodged in packaging & inadvertently discarded). Check parts supplied against parts & fittings listed herein.  
Damaged parts / Omissions may be resolved by calling Lakes Bathrooms Helpline.
6. Whilst precautions are taken in manufacture, care must be taken when handling as rail ends may have sharp edges.
7. Before commencing, check :
  - a) shower tray is level & completely sealed to finished / tiled walls.
  - b) finished walls are sound & free of cracks loose tiles / grout.
8. AFTER INSTALLATION, DO NOT 'WET' ENCLOSURE FOR 48 HOURS TO ENSURE FULL CURE OF SILICONE SEALANT.

## USE :

### General Care & Maintenance.

Providing this product is installed & operated in accordance with these instructions, problems should not arise. However should maintenance be required it should be carried out by a competent person with reference to these instructions. Before any work is carried out the root cause of the problem must be identified. Lakes Bathrooms service engineers are available if necessary to consult / carry out remedial work. Call Lakes Bathrooms HELPLINE.

### Cleaning.

(Every one to two weeks depending on local water {hardness} conditions).

All glass panels in this product have a hydrophobic coating aiding 'runoff' of water droplets, reducing the need for frequent cleaning. For best appearance / product life however, regular cleaning is recommended.

Use ONLY mild soap / detergent solutions to clean. Rinse with water, squeegee glass panels & wipe frames dry with a soft cloth. Under no circumstances should abrasive, caustic or scouring products be used. Cleaning products should have pH value 4 ~ 8.

DO NOT use 'spray & leave' type cleaning products.

Non compliance with these cleaning instructions may cause plated / painted finishes to deteriorate & could adversely affect safe operation of the enclosure.

Limescale ~ should a build up of limescale occur, remove using a 50:50 solution of white vinegar & water applied with a soft cloth & rinsed / dried thoroughly afterwards.

### Daily Care.

To prevent the build up of limescale, do not allow water droplets to dry on glass or frames. After showering, rinse with water, remove droplets from glass with a squeegee & wipe frame with a soft cloth.

### Customer Service.

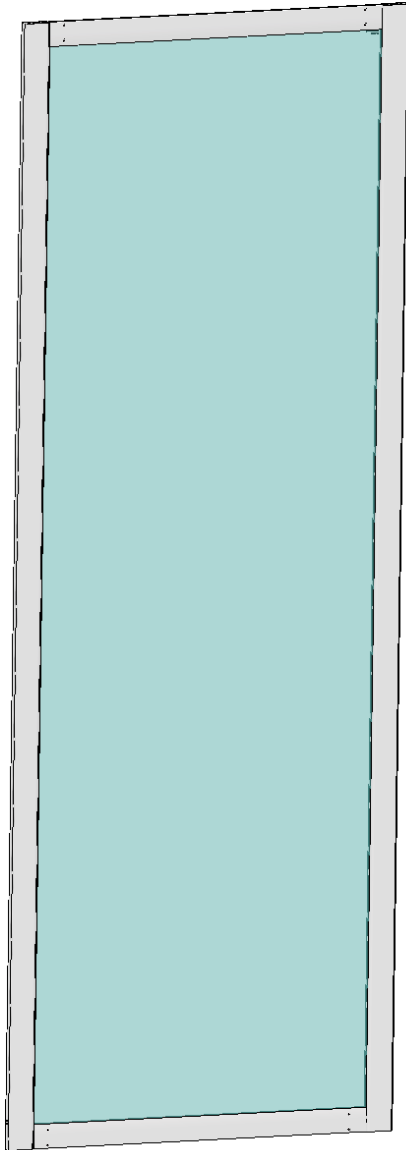
Quality Guarantee : Lakes Bathrooms Ltd guarantee Shower Doors & Enclosures against any manufacturing or material defects for the lifetime of the product. We will resolve defects free of charge by repairing / replacing parts as we feel necessary. To be 'free of charge' service work must be carried out by Lakes Bathrooms or approved agents.

Not Covered by this Guarantee : Damage or defects that result from improper installation, improper use, or lack of maintenance (including limescale buildup). Damage or defects that result from repairs / modifications undertaken by unauthorized persons. This guarantee is in addition to statutory & other legal rights.

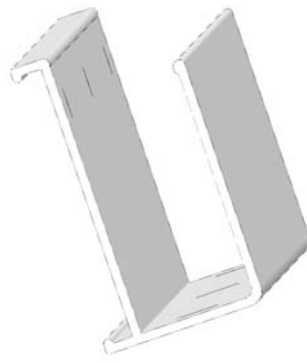
What to do if something goes wrong : Should the product not function correctly on initial use, firstly, contact the installer to check that unit installation & commissioning are in accordance with these instructions. Should this not resolve difficulties or should performance decline, consult 'Troubleshooting' section to see if simple home maintenance is needed. Alternatively our HELPLINE staff can assist, or if necessary arrange for a service engineer to visit.

Spares : We maintain extensive spare part stocks. Spares can be ordered / purchased from your retailer in the first instance. Parts will normally be dispatched within two working days from order placement. Pro Forma invoices will be sent for cheque payments.

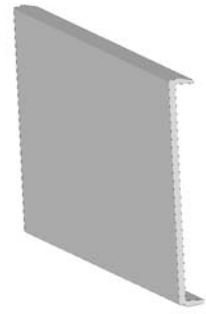
SUPPLIED PARTS :



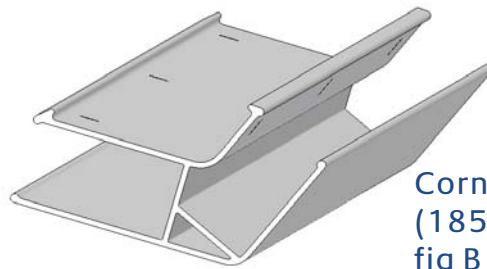
Panel Sub Assy (1x)  
fig B



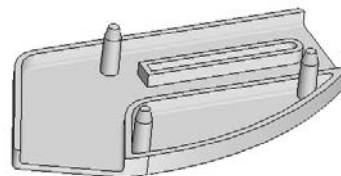
Wall Profile  
(1850mm x1)  
fig A



Cover section  
(Wall Profile)  
(1850mm x1)  
fig D



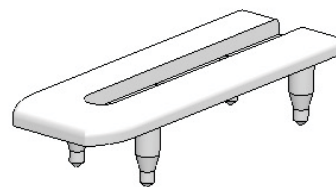
Corner Post  
(1850mm x1)  
fig B



Top Cap (Corner Post)  
(handed pair)  
fig D



Top Cap (Wall Rail)  
(handed pair)  
fig D



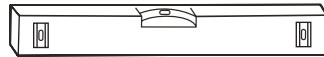
Top Cap (Vertical Rail)  
(handed pair)  
fig D



3.5 x 10 long self tapping  
pan head screw (6x) fig C

Standard Size	Adjustment (A)
1200 x 700mm	685 to 740mm
1200 x 750mm	735 to 790mm

## Tools Required



Spirit Level (with vertical 'bubble')



Tape Measure



Dia 2,8mm HSS Drill Bit



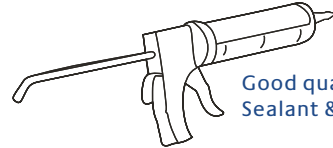
Dia 8mm Tile / Masonry Drill Bit



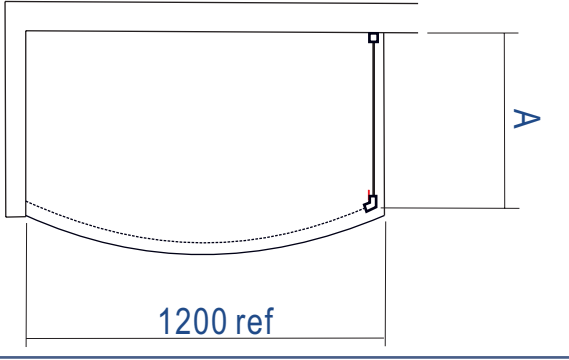
Pencil



Screwdriver (Pozi Drive)

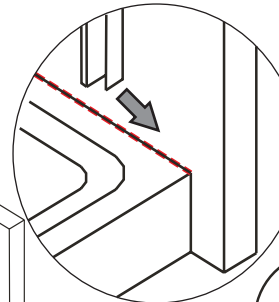
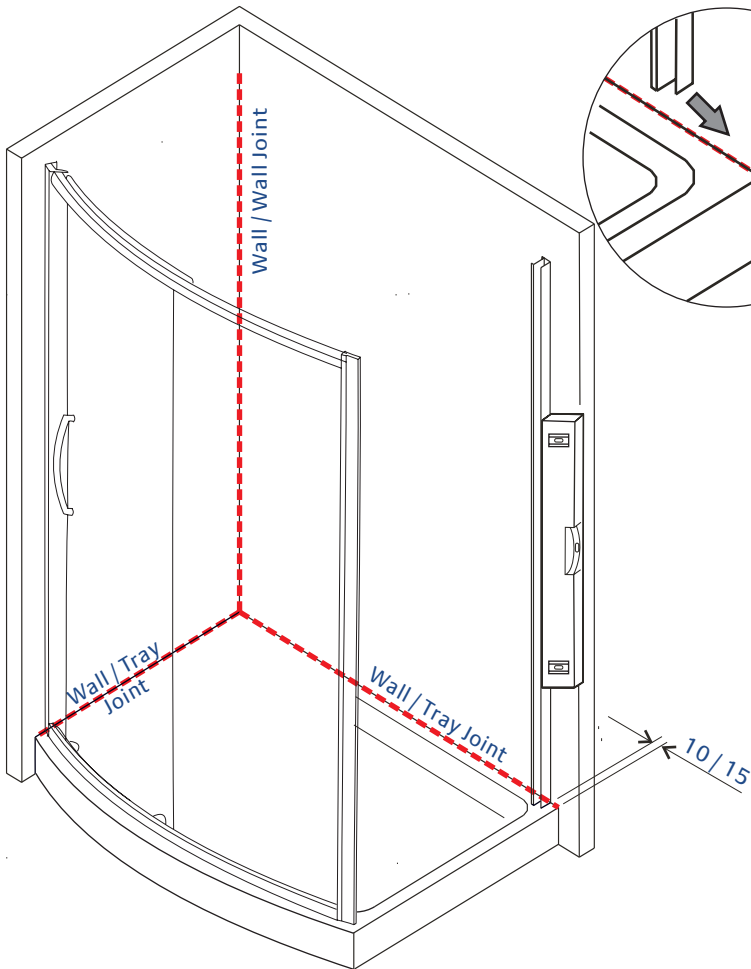


Good quality Silicone Sealant & applicator



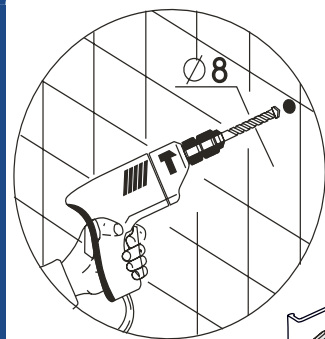
Lakes fully reversible Bowfront Side Panel for use in conjunction with, & suitable for, fitting to left, right or both sides of Lakes Bowfront Sliding Door. Ensure tray is correctly levelled & that tray / wall (tile) joints are sealed & cured over entire length of tray sides (See Fig A) prior to fitting enclosure. **DO NOT SEAL TRAY EDGES UP TO A FITTED ENCLOSURE !**

A

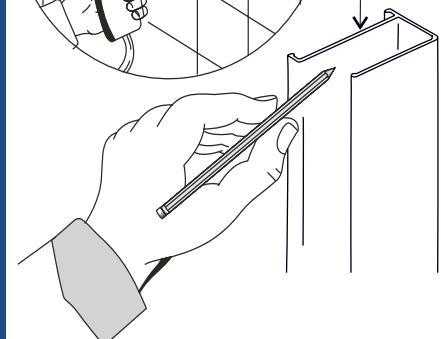


Ensure continuous silicone sealant bead before fitting wall rail

dia 4 x 45 lg



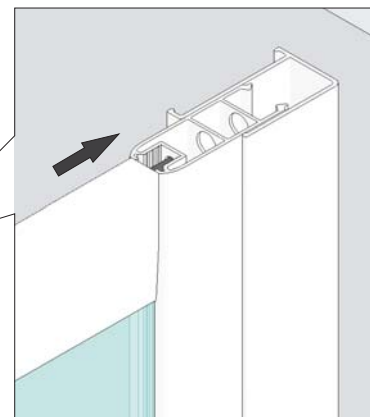
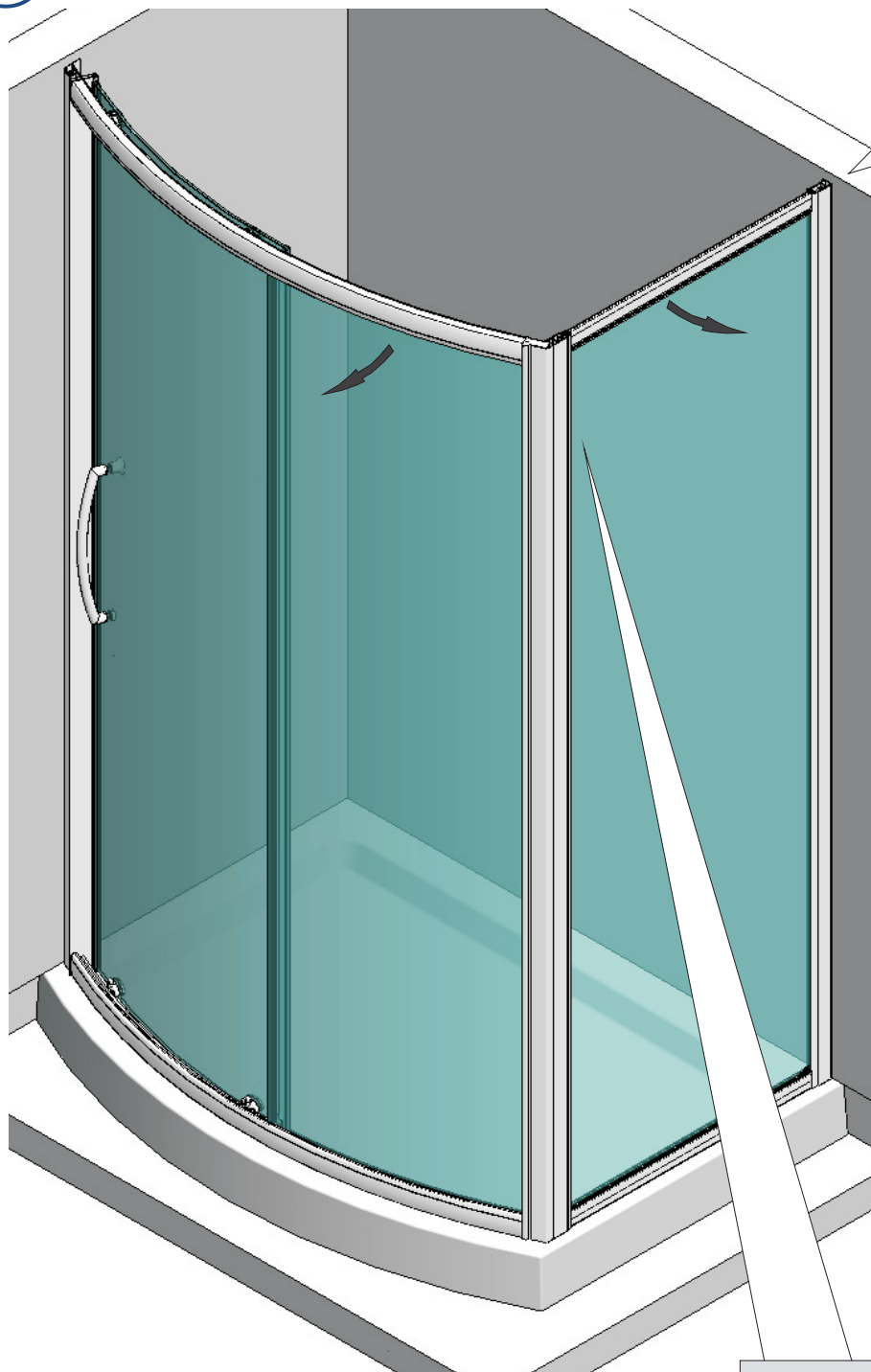
Screw cover channel (inside enclosure)



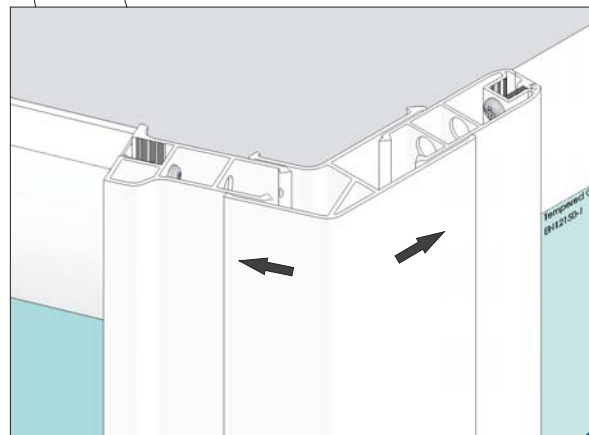
Measure & mark wall rail position.  
Wall rail orientation (screw cover channel to inside of enclosure)  
Mark fixing hole positions, drill, plug & affix wall rail.

Refer to Bowfront Sliding Door installation instructions for assembling door.  
Door should be positioned loosely in its wall profile as shown ~ DO NOT drill & screw until final unit position has been determined (refer to fig C)

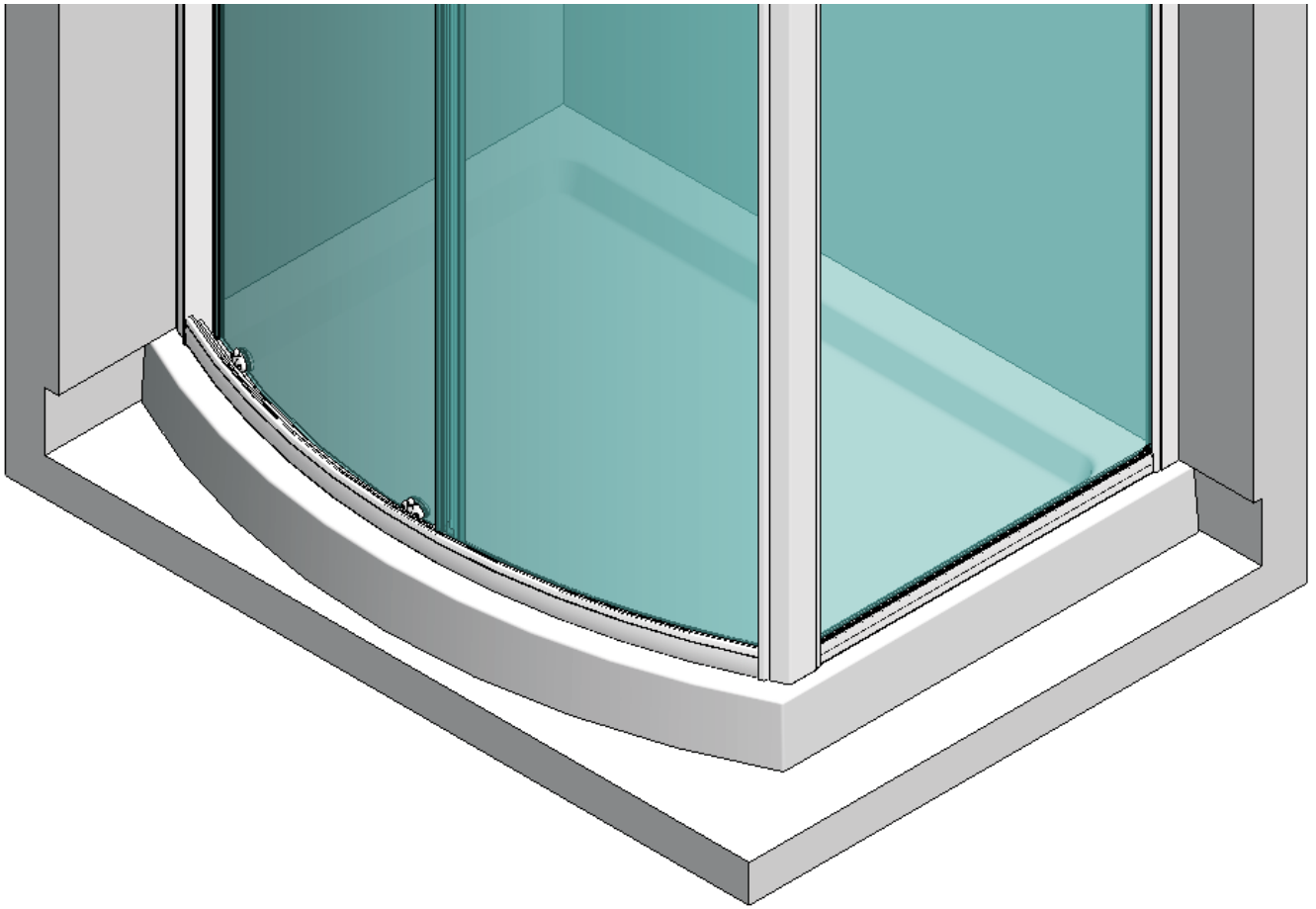
**B** Assemble Side Panel



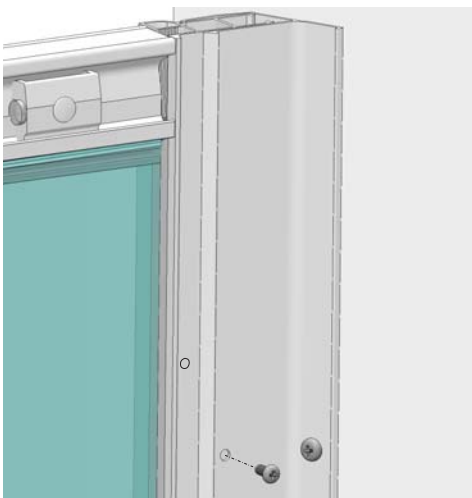
Fit corner post onto side panel & then onto bowfront door.  
Door & Panel may be moved as shown to assist assembly.



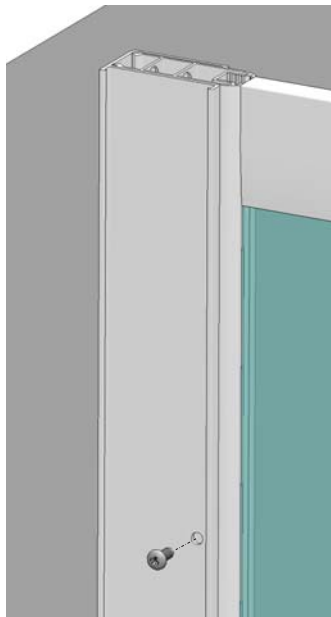
©



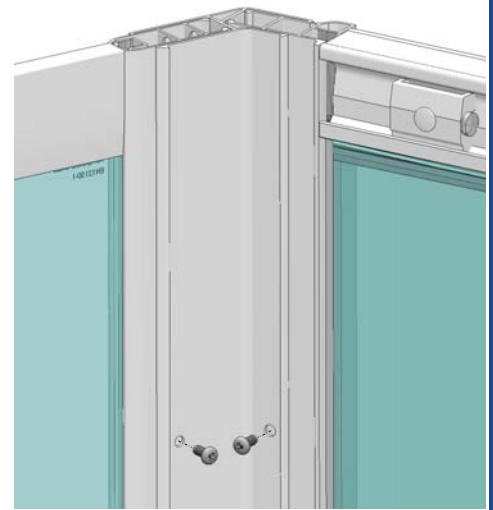
Adjust position of Door & Side Panel until desired position (sides parallel to tray edges) is achieved & enclosure is 'plumb'. From inside enclosure, using wall rails & corner post holes as a guide, drill (dia 2,8mm) & screw enclosure together using 3,5 x 10 long pan head screws (12 screws in total).



Bowfront Wall Rail



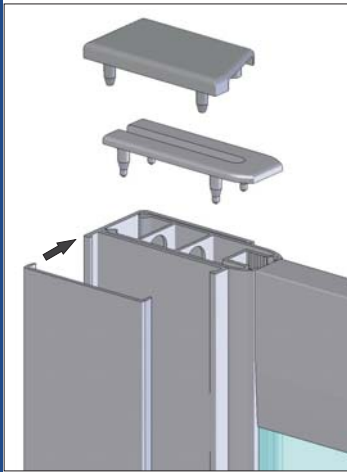
Side Panel Wall Rail



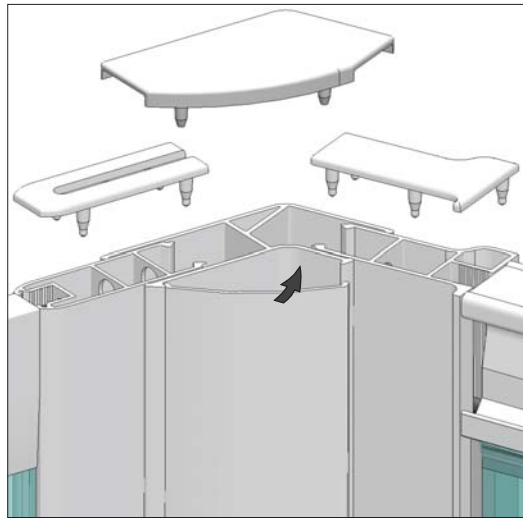
Corner Post

After screwing unit in position, adjust door height & angle (see Bowfront Sliding Door Installation Instructions).

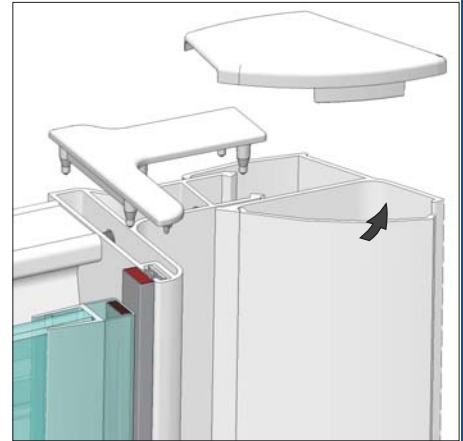
**D** Fit screw cover sections & profile caps.



Side Panel / Wall Profile



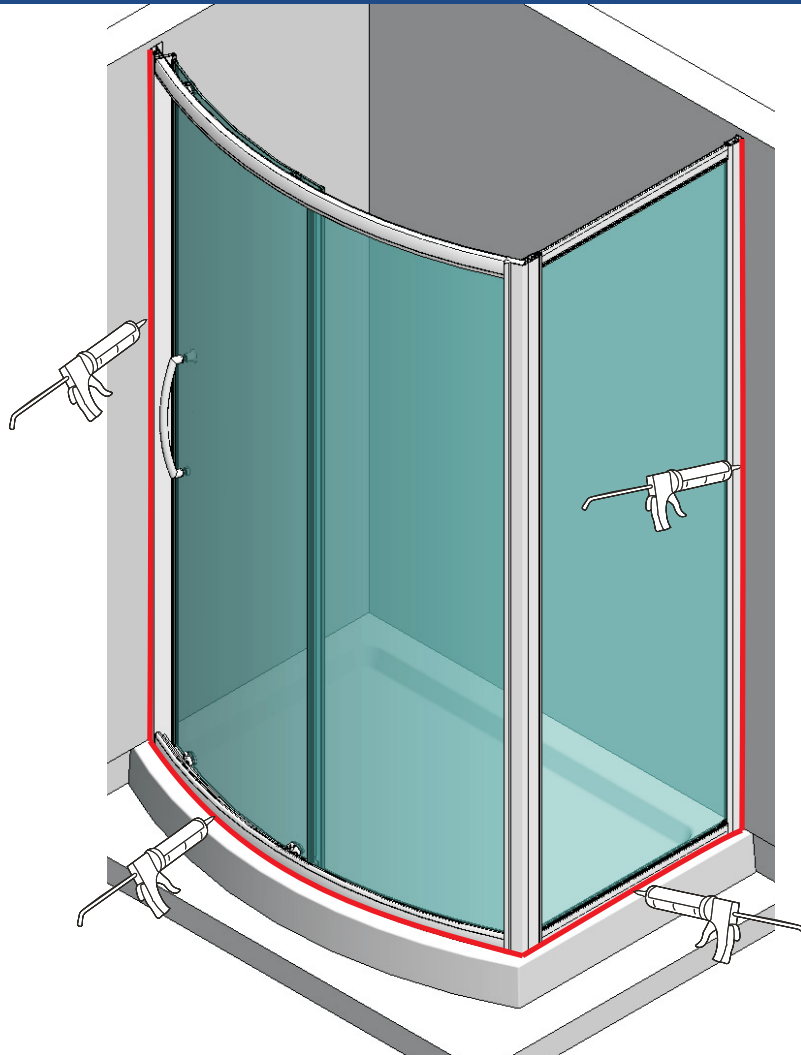
Corner Post  
(Bowfront / Side Panel)



Bowfront / Wall Profile

Align top of cover section with top of relevant enclosure profile, & working from top to bottom press (snap) in over entire length. Select appropriate (hand) caps & press into profiles as shown, clear silicone sealant may be applied to retain, wipe off all excess with damp cloth.

**E**



Use of good quality silicone sealant & cleaning / degreasing of all joint areas is recommended.  
Apply continuous silicone sealant bead as indicated EXTERNALLY ONLY

## BASIC TROUBLESHOOTING :

Door magnetic seals not meeting precisely / not holding :  
Ensure magnetic seals are pushed fully onto door edge over entire door length.  
Check door alignments & adjust if necessary.

Door motion noisy / Door not running smoothly / Door loose on bottom rail :  
Check for edge seals dragging on glass (can cause 'clicking' noise).  
Check top wheels engaged properly in rails & roll smoothly along rails.  
Check door height adjustment ~ raise doors so that spring loaded bottom wheels are in contact with & roll smoothly along bottom rails.  
Wheels & Grooves are factory greased, however over time this may disperse or become contaminated by dust etc, cleaning of grooves & re application of sanitary silicone based grease will restore & ensure smooth door motion.

### Leakage :

The sealing method described in these instructions relies on a continuous seal being applied between shower walls & tray before installing the enclosure (see fig A), it ensures a watertight seal around the perimeter of the enclosure to the shower walls & tray.

In the unlikely event of an enclosure leak, water will be visible on the outside of the enclosure itself, or around the perimeter silicone seal ONLY. Water / moisture appearing outside this area (ie at floor level) is normally due to incorrect tray installation.



Lakes Bathrooms Ltd  
5800 Shannon Place  
Tewkesbury Business Park  
Tewkesbury  
GL20 8SL

Service : England, Scotland, Wales  
8.30am - 5pm Mon~Thurs  
8.30am - 4.30pm Fri

Tel / HELPLINE : 01684 853870  
Fax : 01684 276979  
[www.lakesbathrooms.co.uk](http://www.lakesbathrooms.co.uk)  
Email : [admin@lakesbathrooms.co.uk](mailto:admin@lakesbathrooms.co.uk)

Service : Northern Ireland  
Ian A Kernohan  
Firtrees  
Green Way Industrial Estate  
Conlig  
Northern Ireland  
BT23 7SU

8.30am - 5pm Mon~Thurs  
8.30am - 4.30pm Fri

Tel : 02891 270233  
Fax : 02891 270597  
Email : [info@iakonline.com](mailto:info@iakonline.com)